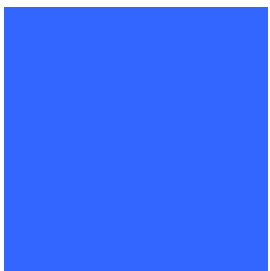




*San Elijo Lagoon* CONSERVANCY

ANNUAL

2008



REPORT

San Elijo Lagoon Conservancy | P.O. Box 230634 | Encinitas, CA 92023-0634  
Phone: 760-436-3944 | Fax: 760-944-9606 | [www.SanElijo.org](http://www.SanElijo.org)

## Table of Contents

Greeting by Pam Slater-Price, Vice Chairwoman of the San Diego County Board of Supervisors	2
Welcome by Denise Stillinger, incoming Conservancy Board of Directors President	3
Environmental Education Program	4
Outreach	5
Biological Management	6
Scientific Monitoring	6
Membership	7
Financials	8
Board of Directors	10
Staff	10
Members	11

## Greeting by Pam Slater-Price, Vice Chairwoman of the San Diego County Board of Supervisors

Dear Supporter of Our Treasured Lagoon:

Welcome to the pages of the San Elijo Lagoon Conservancy's 2008 Annual Report. This document highlights a year of great accomplishments for the nonprofit Conservancy. As custodians of the 1,000-acre San Elijo Lagoon Ecological Reserve, the Conservancy works closely with the County of San Diego to protect this fragile and important ecosystem.

This year you joined me in cutting the ribbon for the new San Elijo Lagoon Nature Center. Since my election in 1992, I began working hard to secure the funding to build this Center. It has been a team effort with county staff and two Executive Directors, Greg Dennis and Doug Gibson.

This \$5.6 million center will serve to educate children about the environment and our treasured Lagoon. In fact, the center itself is an example of environmentalism. Construction was completed using many recycled materials. The center has received LEED Gold Standard recognition for environmental excellence.

It is so important to me that we continue to work together to protect our treasured Lagoon.

Thank you all for your hard work and your interest in the environment and I'll see you on the trail!

Sincerely,

***PAM SLATER-PRICE***

Vice Chairwoman, San Diego County Board of Supervisors



## Welcome by Denise Stillinger, incoming Conservancy Board of Directors President

The Great Egret - you are almost guaranteed a view of this distinctive, majestic resident of the San Elijo Lagoon, even during just a quick "drive by." Its striking, white profile and statuesque poses against the dark, earthy tones of the Lagoon can't help but soothe both the frazzled commuter and the ardent birder alike. Common today, it is hard to imagine that the Egrets were hunted to near extinction in the late 1800's - all for the sake of high fashion to adorn hats with their elegant feathers. Only when the Great Egrets were protected by law, did their population begin to return from the brink of extermination.



Twenty-two years ago, the San Elijo Lagoon Conservancy chose the silhouette of this graceful bird as an emblem of our organization. A fitting image, since the Egrets were beginning to recover and repopulate the north coastal region of San Diego County in significant numbers at that time. Their success was due in large part to favorable foraging and nesting opportunities within and around the boundaries of the then newly-established San Elijo Lagoon Ecological Reserve, a natural habitat that was itself brought back from the brink of extinction when it was threatened by development.



Great Egret, photo taken at the San Elijo Lagoon by Herb Knufken

Since its founding, the Conservancy has grown tremendously, reflecting the community's growing concern and appreciation for the health of the Reserve. As membership in the Conservancy has increased, the viability of this precious natural resource has been ensured, which in turn contributes to the success of many species like the Great Egret. And concurrently, the population of the Great Egret has continued to grow as well.

Today, Egrets once again breed in the Reserve and make it their home, much like the community now has a new

home at the Lagoon in the form of the new state-of-the-art "green" nature center. As the public's awareness of the importance of these coastal wetlands has increased, the new nature center bears testimony to the community's investment in the environment. I hope you will continue to invest in our natural local environment by supporting the Conservancy.

Our organization's ultimate fate is similar to the Egret's: Even though Egret populations have rebounded, there are still constant pressures from habitat loss and fragmentation that threaten their numbers. So too, the Conservancy relies on your support to remain viable and thus ensure the viability of the San Elijo Lagoon Ecological Reserve. With the ongoing help of all community members, the Conservancy will continue the positive momentum of 2008 captured on these pages into 2009 with an expanded education program, more open space acquisition, and the full restoration of the Reserve on the horizon. And then, that horizon will always be graced with the elegant silhouette of the Great Egret.

Thank you for your support,

***DENISE STILLINGER***

2008 Board of Directors Vice President, 2009 Board President

**Environmental Education Program** The Conservancy's environmental education program is founded on the belief that in order to protect and preserve our natural environment, we first need to understand it and appreciate it. To this end, professionally trained naturalists lead schools and other youth groups on guided walks throughout the extensive network of trails in the Reserve. Students can touch, smell and see first-hand the rich diversity of animal and plant life at the Lagoon, and the consequences – both favorable and unfavorable – that our choices and actions have on the environment. The Conservancy also offers regular docent-led walks to the public.

In 2008, the Conservancy conducted a comprehensive seven-week training program for new docents. The program included expert speakers from around the county, field and classroom study, and shadowing opportunities for the trainees. A record 24 newly trained naturalists graduated from the program. With the completion of a new docent manual in 2008, covering extensive natural history material as well as interpretive skills, the dedicated docents now have an up-to-date and all-inclusive reference guide.

In the past year, the docents shared the wonders of San Elijo Lagoon with more than 1,000 students from 18 different schools, four colleges, and thirteen other youth groups. In addition, the docents provided interesting insights about the magnificence of the Reserve and its inhabitants to some 150 community members on the monthly guided walks.



Children participating in environmental education activity at the lagoon. Photo: Tara Fuad.



Local school children on docent-led walk in the reserve. Photo courtesy of Solana Beach Sun.

"Thank you to the Conservancy for teaching me how important it is to take care of the Lagoon and all of nature." *Heidi Hogan, 3rd Grader*

"When we saw the Egret flying, we were all screaming, but then we all became silent. The Conservancy docent told us that the Great Blue Heron was as tall as Diana." *Mrs. Bacon's 3rd Grade Class*

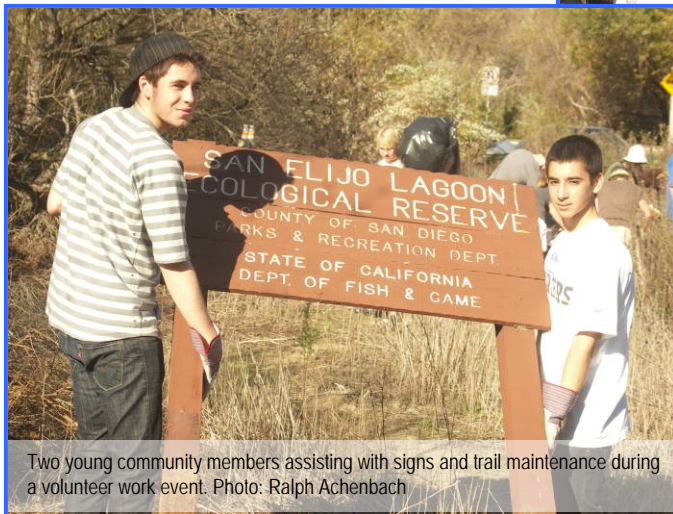
"The Conservancy does a great job of educating the public and sharing the beauty of the Reserve." *Nick Buck, City of Encinitas*

**Outreach** As part of its outreach activities in the community, the Conservancy offers monthly volunteer work parties, allowing community members to participate hands-on in the conservation of the San Elijo Lagoon. Work sites vary throughout the Reserve, and activities typically include habitat restoration, trail maintenance, and trash cleanup. All participants receive in-depth information on the Reserve, the watershed, and ways to protect them, including water conservation, drought-resistant landscaping, etc.

In addition, the Conservancy maintains a prominent presence in the community at various public events, providing information on how best to enjoy the Reserve. The Conservancy's signature 'Lagoon Day' celebration is held annually in the spring.

The Conservancy also publishes a quarterly newsletter and monthly e-newsletters, to keep the community informed about developments in the Reserve.

In 2008, volunteer attendance at work parties increased dramatically with an average of 30 volunteers per month participating, contributing a total of more than 360 volunteer hours. The Conservancy also had informational booths and presentations at a variety of events, including the Fiesta del Sol in Solana Beach, Roxy Jam Cardiff at Cardiff State Beach, and Encinitas Environmental Day and gave presentations to local schools and community groups. The 2008 Lagoon Day attracted more than 300 visitors. In 2008, the Conservancy added several free e-newsletters for various constituent groups, to ensure that information on the Reserve is disseminated to the public in a timely and efficient manner. The Conservancy also introduced a paperless version of its quarterly print publication to further conserve precious resources.



Two young community members assisting with signs and trail maintenance during a volunteer work event. Photo: Ralph Achenbach



Participants at a monthly volunteer work party conducted a clean-up. Photo: Ralph Achenbach

**"I have seen the Conservancy up close, and I think the work there is first rate, and I would like to support it in any way I can."**

*Mike Sosebee, Conservancy volunteer*

**"Thank you for the great job the Conservancy does for its neighbors."**

*Faith Price, Conservancy volunteer*

**Biological Management** The Conservancy's Habitat Management Program for the Reserve includes Lagoon inlet maintenance and associated water quality monitoring, habitat restoration, invasive plant control and land acquisition. Substantial efforts are made to actively manage the San Elijo Lagoon ecosystem. Efforts over the past fourteen years to keep the Lagoon open to tidal circulation have demonstrated that significant ecological benefits result from increased tidal flushing, as evidenced by increased diversity and abundance of fish and invertebrates, improved water quality, reduced production of mosquitoes and midges, increased foraging and enlarged nesting areas for threatened and endangered birds such as the Belding's Savannah Sparrow, and increased foraging by other birds. These ecological improvements have also fostered significant public enjoyment of the Lagoon.

In 2008, the Conservancy treated 20 new acres of arundo, pampas grass, tamarisk, and other Tier 1 and 2 invasive plants. In addition, over 450 acres of prior infestation sites previously treated throughout the Carlsbad Hydrologic Unit were re-treated in 2008, and the Conservancy revegetated these areas with more than 400 native plants.

After many years of work by the Conservancy and its partners, a major restoration of San Elijo Lagoon is now in the final planning stages. Budgeted for over \$120million, this project will restore both tidal circulation and a natural gradient of habitats from saltwater marsh in the west end of the Lagoon to riparian and upland habitats in the East Basin. Work on the final Environmental Impact Statement/Environmental Impact Report (EIS/EIR) will begin in early 2009 and be managed by Conservancy technical staff. The investigations leading up to the final document and restoration plan will involve numerous biological and engineering studies, including surveys of sensitive Lagoon flora and fauna, water quality, tidal hydraulics and a sea level rise analysis to factor in the effects of climate change. The Conservancy will also oversee the public review process that will keep its stakeholders and interested citizens informed throughout this critical process.

**Scientific Monitoring** The Conservancy's scientific monitoring activities include comprehensive regional water quality testing. Under a grant from the California State Coastal Conservancy, regional hydrologic and water quality monitoring in five sub-watersheds of the Carlsbad Hydrologic Unit (CHU - HU904) continues, assisting San Diego County and local cities gather data for the determination of Total Maximum Daily Loads (TMDL) for four coastal lagoons. The Conservancy also plays an active role in the Bight '08 monitoring program, representing San Elijo Lagoon in the Coastal Wetlands Eutrophication Study, undertaken from Point Conception to the Mexican Border.



Barry Lindgren, staff scientist (left), and Doug Gibson, Executive Director//Principal Scientist (right), conducting scientific monitoring activities.  
Photos: Barry Lindgren/SELCA archives



*"Thankfully this group of citizens had the foresight to preserve the Lagoon."* John Seiber, Conservancy President's Council

*"The Conservancy's efforts enhance the property and optimize its value to wildlife."* Tim Dillingham, California Department of Fish & Game



**Membership** The Conservancy is a membership-based community organization. Amongst the benefits of membership at the 'major donor' level is an annual major donor appreciation event. President's Council members and Legacy Donors are invited to regular private guided tours of the Lagoon. To ensure the ongoing health of the San Elijo Lagoon and the viability of the Conservancy in preserving, protecting and enhancing the Ecological Reserve, the Conservancy maintains several endowments.

In 2008, the Lagoon family grew further, with 79 new members joining the Conservancy. The Conservancy also added six new Legacy Donors, and five new members joined the President's Council. For a list of all members, President's Council Members and Legacy Donors, please see pages 11-16. The 2008 Major Donor Reception featured guest speaker Dr. Steve A. Kay, Dean of Biological Studies at UCSD, with an engaging talk about 'generation 3' biofuels created from micro algae and the importance of the Conservancy's conservation work. In 2008, the Operating Endowment Campaign raised \$175,600 towards its 2010 goal of \$1,000,000. This significant increase in donated dollars over the previous year was made possible by a matching gift challenge from Frances Hamilton White, which resulted in 27 new donors to the endowment.

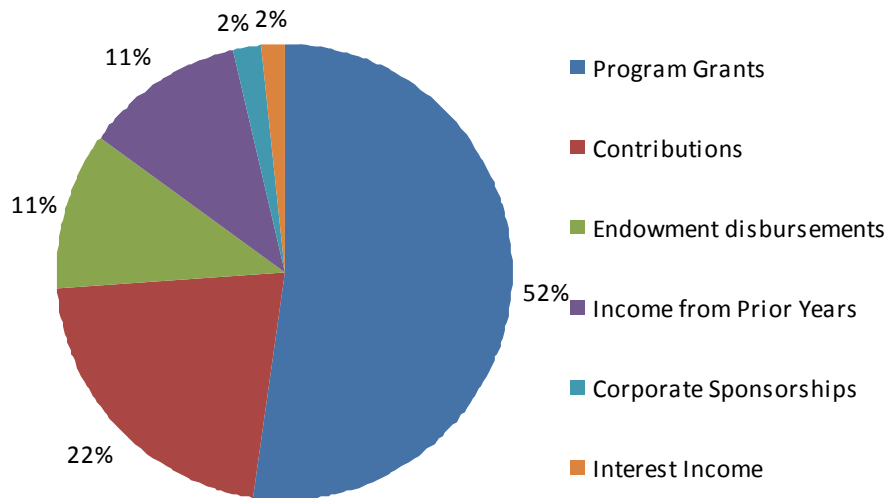


*"Being affiliated with the conservancy inspires me when the thought of creating and maintaining a permanent place for nature which continues into perpetuity brings back greater meaning and contentment to my life." John Zagara, President's Council Member*

## Financials

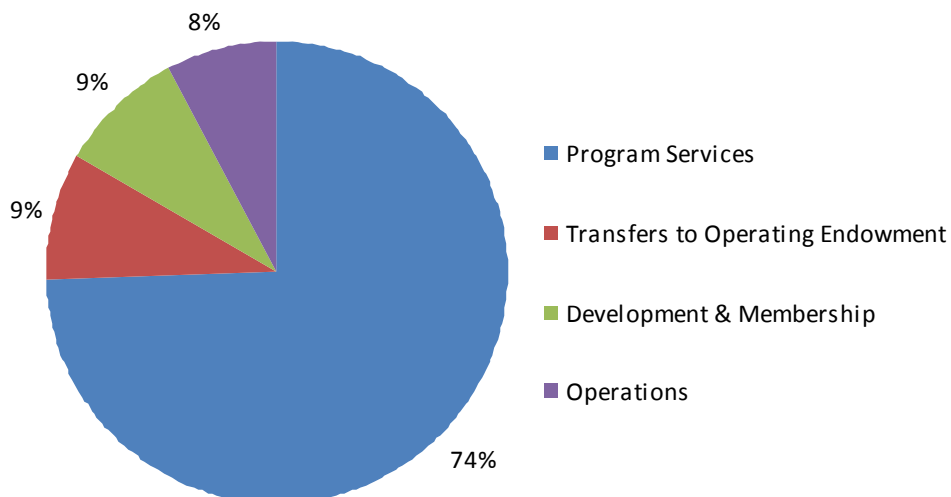
### Support & Revenue

Program Grants	\$	563,522.76	52.13%
Contributions	\$	235,466.47	21.78%
Endowment Disbursements	\$	119,503.60	11.05%
Income from Prior Years	\$	122,050.58	11.29%
Corporate Sponsorships	\$	22,500.00	2.08%
Interest Income	\$	17,961.79	1.66%
<b>Total Support &amp; Revenue</b>	<b>\$</b>	<b><u>1,081,005.20</u></b>	



### Costs

Program Services	\$	804,870.57	74.46%
Transfers to Operating Endowment	\$	94,514.43	8.74%
Development & Membership	\$	96,388.73	8.92%
Operations	\$	85,231.47	7.88%
<b>Total Costs</b>	<b>\$</b>	<b><u>1,081,005.20</u></b>	



**Assets & Liabilities Summary**  
**(As of 12/31/2008)**

**Assets**

Tidal Circulation Trust	\$	1,788,763.89
Conservation Land	\$	2,142,970.83
Investments Held for Programs	\$	579,747.03
Operating Endowment	\$	644,769.42
Reserve	\$	138,194.08
Cash Balances	\$	97,815.81
Property & Equipment (net of depreciation)	\$	45,000.19
Scholarship Fund	\$	11,246.36
Other Assets (note 1)	\$	11,134.39
Accounts Receivable	\$	333,407.58
<b>Total Assets:</b>		<b>\$ 5,793,049.58</b>

**Liabilities and Net Assets**

Current Liabilities (note 2)	\$	696,978.21
Net Assets	\$	5,096,071.37
<b>Total Liabilities and Net Assets</b>		<b>\$ 5,793,049.58</b>

note 1: pre-paid expenses

note 2: accounts payable and deferred revenue for programs

## Board of Directors

Andy Mauro - *President*

Denise Stillinger - *Vice President*

Barbara Moore - *Secretary*

Craig Olson, Ph.D.- *Treasurer*

John Seiber - *Chair, President's Council*

Sally Foster

Mark Huffman

Kevin Johnson

Peter Johnson

Marissa Marion

Jim McCall

Bob Moore

Margaret Parry

Celesd F. Willoughby

## Staff

Doug Gibson - *Executive Director/ Principal Scientist*

Ralph Achenbach - *Outreach Coordinator*

Elaine Dodge - *Development Director*

Tara Fuad - *Education Director*

Barry Lindgren - *Staff Scientist*

Debby Strauss - *Program Assistant*

Amy Trujillo - *Biologist*

## Members

### LEGACY DONORS

Elaine Dodge & Martin Staubus  
Lynne & Marc Friedmann  
Bill Gish  
Tom & Donna Golich  
Rev. Bill & Patti Harman  
Tom Heywood & Stephanie Wilde  
Robert Jensen & Erin Thomas  
Mayme Kline  
Peter & Marge Kohl  
James Lauer  
M. Alberta Kruger Declaration of Trust (realized)  
Andy & Kathleen Mauro  
Brys & Rita Myers  
Craig & Jeanne Olson  
Mariette Pinchart  
Janet Placido  
Marjorie Waldroop  
Ret. Col. Harold Wright (deceased)  
Art & Sandy Yayanos

### PRESIDENT'S COUNCIL

Members of the President's Council are marked by an asterisk.

### GUARDIANS OF THE LAGOON

#### "Great Horned Owl - \$10,000+"

Frances Hamilton White\*  
Ise Epprecht\*  
Quiksilver Foundation

### PROTECTORS OF THE LAGOON

#### "California Brown Pelican - \$5,000+"

ACS Habitat Management  
Casey & Hilary Gauntt  
Bill Gish\*  
Mike & Dawn House\*  
Elizabeth Keadle\*  
Las Olas Mexican Restaurant  
Brys & Rita Myers\*  
Qualcomm Corporate Giving  
John & Patricia Seiber\*  
Denise & Dave Stillinger\*  
Union Bank of California Foundation

#### "Great Blue Heron - \$2,500+"

Cardiff Seaside Market, Inc.  
Hokanson Associates  
Georgia Jenks  
Andy & Kathleen Mauro\*  
Patagonia  
Jack & Patty Queen\*  
Janet, Joy Marie & Peter Simon  
Dr. John & Marcia Trombold\*

#### "Red-tailed Hawk - \$1,000+"

Gladys Baird

Jeffrey & Sally Busby  
Tom & Karen Clotfelter\*  
Martin & Carol Dickinson\*  
Elaine Dodge & Martin Staubus  
Dudek  
Mac & Audrey Elliott  
Steve & Pam Fitch  
Carl & Christina Fredericks\*  
Doug & Lauren Gibson  
Tom & Donna Golich  
Neil Hokanson\*  
Ann Hunter-Welborn  
Kathie Jackson\*  
Johnson & Johnson PRD LLC  
Mayme Kline  
Robert & Mary Knight  
Peter & Marge Kohl\*  
Peter & Edith Ladow  
Mark & Carol Levin  
Michael & Julie Luther  
Kim MacConnell & Jean Lowe  
Andy & Carlana Maduza  
Marissa Marion & Dave Fox  
Susan McAllister  
Craig & Jeanne Olson\*  
Gary & Joyce Pickersgill  
Mariette Pinchart  
Ned & DeeDee Reynolds  
RF Products  
Tony & Liz Salant\*  
William & Kathryn Scripps  
Michael Shields  
Leslie Shelly  
Darrell & Jill Shrader  
Elizabeth Venrick  
Weingart-Price Fund at The San Diego Foundation  
Celesd F. Willoughby & Heather Kinch  
Paul Worthington\*  
Yogi's  
John & Val Zagara\*

#### "White-tailed Kite - \$500+"

John & Linda Alspaugh  
Bank of America Foundation  
Alan & Cheryl Barnebey  
Steve Brad  
Bob & Lois Chaddock  
Charles & Ruth Dealy  
John DeBeer & Mona Baumgartel  
Steve & Jane Dempsey  
Jeannine Dodge  
Sally Foster  
R. Darrell Gary & Janice Brooks Gary  
Gretchen Gerlach  
Susan Graham  
Stuart Grauer  
Susie Hayes  
Joseph Heilig & Lorraine Pillus  
Mary Luz Tenorio de Herms (in memoriam)  
Diane Hollister  
Lorine Honeyman  
Mark & Davi Huffman

Jocelyn Jenks  
Doug & Susan Jensen  
Gerald Johns  
Kevin Johnson & Jeanne MacKinnon  
R. Craig & Suzanne Johnson  
Todd & Tracy Jones  
Martin & Mary Lighterink  
Eric & Suellen Lodge  
Mark & Susan Lyon  
Joe Markee & Terrie Boley  
Jack & Lois Martin  
Tom McCabe  
Gioia Messinger  
Barbara Moore  
Bob & Cindy Moore  
Mr. & Mrs. Thomas Munnecke  
Nojan & Pamela Omid  
Margaret Parry  
Robert & Shauna Patton  
Todd J. Plastino  
Daniel Powell  
Rancho Santa Fe Garden Club  
REI  
Doug Schnorr  
Barry & Debby Strauss  
Audrey Terras  
Jan Wier  
James Williams & Elizabeth Awes  
Patricia Young

#### "Western Scrub Jay - \$250+"

Jon & Clemencia Appel  
Brewster & Shirley Arms  
Dan & Virginia Bacalski  
Kaveh & Elaine Barjesteh  
Gerald & Shela Bordin  
Robert & Karen Budetti  
Coastal Community Foundation  
June Collins  
David Coppedge  
Robert & Patricia Cozens  
Alice De Celles  
Michael & Shannon Dempsey  
Gordon & Cathie Dixon  
Tom & Mary Evers  
Marc & Lynne Friedmann  
Hal & Pam Fuson  
John & Jill Gartman  
Douglas Gillingham & Dana Frieauf  
Alexander Giritisky  
Goodrich Corporation Partners In Giving Plan  
Brad & Lauren Greider  
Bridgette Hadorn  
Donald & Deborah Halliday  
Salah Hassanein  
Ken & Susan Heffner  
Tom Heywood & Stephanie Wilde  
Ken & Barbara Holland  
Kent & Candace Humber  
Katrina Kelly  
Andy & Pam Kurz  
Jane Larsen

Dennis & Kathleen Lees  
David & Jayne Lesley  
James & Nancy Likins  
Donald S. & Jane MacKinnon  
Randall & Constance Malin  
Graham & Linda Milner  
Loren & Susie Nancarrow  
Cindy Pedersen  
Norman C. & Sandy Roberts  
San Diego Horticultural Society  
Marcia Schofield  
Tom & Veronica Seay  
Nicolle Selby-Thomas  
Pemberton & Jean Smith  
Solana Point HOA  
Lois Stillinger  
Barbara Swanson  
Michael Tillman  
Justin & Amy Trujillo  
Keith Vrhel  
Charles Wegner  
Terrence & Tracy Weiss  
Katherine White  
David & Sherry Winkler  
Daniel Wulbert  
Teresa Young

#### GENERAL MEMBERSHIP

##### "American Avocet - \$100+"

Scott & Kathy Aldern  
Nicholas Alston  
Michael & Marilyn Ames  
Joseph & Patricia Amshey  
George M. Argoud  
Brian Arnold & Ronilee Clark  
Jeff Bada & Margaret Schoeninger  
Jacqueline Badger Mars  
Emily Bagnall  
Michael & Susan Banks  
Ralph & Dorothy Banks  
Steven & Eva Barnes  
Don & Teresa Barth  
Terre Becker  
Bruce & Mary Berend  
John & Margot Berg  
Bill & Barbara Berrier  
Margaret Biehl  
Dave & Kathy Billings  
Donna Blackman  
Kathy Bouchey  
Janice Brehm  
D-Ann Brock  
Ken & Joan Bunyard  
Jim & Diana Burdick  
Brett & Sheila Burruss  
Barry & Joanne Butler  
Vince, Diane & Samatha Byrnes  
Mr. & Mrs. James Callan  
James & Patricia Carmel  
Andrew & Joan Chitrea  
John Cione  
Chaco Clotfelter

Mike & Sheila Cole  
Elena Collavin  
Rachelle Collier  
Roger & Patricia Collins  
Allan & Kelly Connell  
Joanne Coomes  
Martha Cordova  
Jose R. Criado  
Candace Curlee & Debra Dominski  
Michael Davidson & Lori Chamberlain  
Karen Davies  
Donald Davis & Lesa Heebner  
Kim Dealy  
Lon & Sandra Dean  
Caroline DeMar  
Nick & Cristina DePolo  
John Dewald  
Larry & Cheryl Deysler  
Kathleen Dickey  
Steve Dinkin & Tara Fuad  
Harry Dodge  
Mark & Jenny Dowling  
Edward & Edith Drcar  
Jeanine Dreifuss  
Espresso by the Sea  
Daniel Essig  
Beth Fainberg-Glener  
Gerald & Janne Fecht  
William Fender & Kathi Olsen  
Michael Fisher & Elizabeth Meier  
Karl & Suzanne Fleming  
Jolie Foreman  
Gail Fuad  
Ellen Fujikawa  
Bill & Holly Gastil  
Steve Gebler  
Marcy Gehrke  
John & Lis Georgeson  
Jason & Jesse Giesson  
Morley & Deana Golden  
Richard Gomez & Lina Mendenhall  
Rosemary Goodyear  
Henry & Catherine Graham  
Dana Gran  
Tandora Grant  
Daniel Green  
Herbert & Renita Greenberg  
Jim & Carrie Greenstein  
Thomas & Margaret Greubel  
Noah & Rena Hadas  
Debra Hager  
Stacey Halboth  
Patrick Hannifin  
Ann Hannon  
Judy Hanson  
Bill & Patti Harman  
Marjorie Hatcher  
John Hayes  
Harry & Vivian Heid  
J. William Hinchy  
Colin & Vicky Holman  
Stanley & Annette Hook

Michael Hooper  
Horizon Christian Fellowship  
William & Pam Howe  
Mark Huber  
Virginia Huey  
Carl & Lisa Hulle  
Richard & Pamela Hyatt  
Michael & Vera Irvine  
Jerald & Karen Jellison  
David & Donna Jennings  
Gordon & Janell Johns  
Gary Johnson & Florence Harrod  
James Johnson  
Chalmers & Sheila Johnson  
Eric & Brenda Johnson  
Michael Kalichman & Linda Roux  
John Kaufman  
Andrew Kean  
Joe Kellogg  
Gwen Kenney  
Marjorie Kenyon-Cler  
Michael & Jeanne Kew  
John & Sheryl Kies  
Jonathan Kies & Kristine Brady  
Mark Klammer  
William & Sandra Knowles  
Sachiko Kohatsu & James Held  
La Costa Canyon HS Science Dept  
Wells & Betty Lange  
Philip & Susan Lawler  
Mr. & Mrs. Thomas Lawton  
Michael & Teresa Lea  
Roger & Lois Lighthart  
Peter & Ann Linz  
Katharine & Stein Lundby  
Violet D. MacDonald  
Norman & Marilyn Macleod  
Chris & Laura Maloney  
Michal & Eli Margalith  
Steve Marley  
Daniel & Anne Marie Marotta  
Virginia Martin  
William Kyle Martin  
Peggy Ann Martin  
Keith Marzullo & Susie Armstrong  
Alanson & Janet Mason  
Greg McBain  
Marilyn McCurdy  
Bruce & Marie McFarland  
John & Mary McIsaac  
Don & Jeanne McPherson  
Paul & Julie McPherson  
Steve & Cristina McSkimming  
Wendy McWethy  
Ketsela Mengistu  
Ken & Dottie Metzgar  
Geoffrey Miller & Karen Haubrich  
Thomas & Bonnie Minamide  
Patricia Moleski  
Bill & Mary Moser  
Emilio & Lillian Muras  
Joseph Musser

Barry Naughton  
Thomas & Mary Nee  
Lyn Nelson  
Charles Nelson  
John Ninomiya  
The Ohman Family  
Abe Ordover  
Jere & Joyce Oren  
Ken Owen  
John & Linette Page  
Edward & Barbara Pearson  
Annkatrin Petersen  
Jane Pettus  
Janet Placido  
Bryan Poffenberger & Susan Hesse  
Ann Pogue  
Jard Polonitza  
Dadla Ponizil & Judy Berlfein  
Marcus Presar  
Lindsay & Debra Quackenbush  
Ann Quebedeaux  
Phillip Raffee & Lois James  
Joe & Karen Ramsdell  
Charles & Donna Randolph  
Carol Rayes  
Barry & Karen Reeve  
Corey Reeves  
Tracy & Debby Richmond  
Ross Ridder & John Spencer  
David W. Roberts  
William & Beverly Roberts  
Edson & Colleen Rood  
David Rose  
Pat Roskowski  
Paul & Dianne Saber  
Diane Sachs  
Ramona Sahn  
Howard & Lauri Sampson  
San Dieguito Riders  
San Dieguito Woman's Club  
Josiah & Abbie Sand  
Mark & Linda Saxon  
Jeff & Deb Schmidt  
Roger & Louise Schmitt  
Mary Schwalen  
Angela Scott  
Nigel & Clare Shankley  
Raquel Shantal  
Tom & Candy Shepard  
Jerry & Frieda Shiller  
Jim & Gretchen Simpson  
Frank & Barbara Skopec  
Dale Smathers  
Mary Jean Smith  
David Smith  
Allys Smith  
Judy Smith  
Barbara Snow  
Maida Soghikian  
Sandy Somerville  
Marty Sommercamp  
Ellen Speert

Bill Stallcup  
Peter & Anne Sticklen  
James & Kathleen Stiven  
Martin & Maryann Stone  
Daniel Stone  
Mark & Toni Storer  
Ted & Joyce Strauss  
The Sullivan Family  
Cliff & Pam Surko  
Bruce & Marge Sutherland  
David & Kathleen Tansey  
Jean Tempke  
Jed Terry  
Donna Thal  
Brian Thompson & Nancy Matus  
J. Reed Thompson  
Pat Tirona  
Rachel Townsend  
Stephen Usher  
Madeleine Vastine  
Judy Weaver  
Edward & Jean Wedbush  
Mike & Betzi Weinberg  
Jim Weinell  
Robert Weisgrau  
Mark & Gayle Wells  
Michael White & Jerre Stallcup  
Allen White & Julie Haugsness White  
Mark & Deborah Whitehouse  
John Wigmore  
Elizabeth Winant  
Leonard Wittwer  
Paul & Jane Woody  
Douglas Wright & Susan Chivers

**"California Quail - \$50+"**

Ralph & Kelly Achenbach  
Timothy Adams & Michelle Walter  
Ruth Aiau & Kathy Aiau  
Sophia Alsadek  
Miles & Erica Anderson  
Richard & Barbara Anderson  
Richard & Susan Andrews  
Eva Armi  
Peter Ash  
Richard & Mildred Atchison  
Rollie Ayers  
Brian Baer  
Leo Baggerly & Carole Baggerly  
Ritu Bakhru  
Steve & Bernice Baran  
Allan & Jackie Barrett  
Stephen Beck-von-Peccoz  
Hazard Benedict  
Steve Benjamin & Nancy Loper  
Scott & Paula Benson  
Lisa Bentson  
Herman Betita  
Daniel Bilotta & Debbie Schaefer  
Inge Bisconer  
Greg Bishop  
Elisabeth Black

Rennie Block & Debbie McGraw  
Richard & Jan Block  
Katherine Blumberg  
Bob & Sue Bobbitt  
Beverly Booher  
Billie Bowen  
Gregory Brown  
Neil Bruington  
Rocco & Kimberli Brunetti  
Mike & Nancy Buchmeier  
Richard & Twink Bumann  
Joseph Bunn & Deb Weir  
Laurilyn Burson  
Dave & Joyce Carlson  
Paul & Chryse Carter  
Phil & Laurie Catron  
Bill & Willi Caylor  
Will & Bette Childs  
William & Kay Cohn  
Bill Collins & Ann Irwin  
Gilbert Combs & Dixie Curran  
Scotch & Eloise Comer  
Joe Cooke & Patty Cornelius  
Robert & Sue Corringham  
Dennis Cramer  
Barbara Craner  
Ray Crawford  
Oma Cremin  
Ed & Bettie Creutz  
Paul & Sarah Culver  
Mary Cutchin  
Bemanali & Fay Dadbeh  
Laura Dahan  
Andrew & Joyce Dart  
Margaret Davis  
Joan Davis  
Richard & Mary Davis  
James & Lynn DeBoo  
Steve & Cherylann Deering  
John Denton & Nancy Levin  
Dean & Alexa Dilley  
Virginia Dimitry  
Allan & Carol Dodds  
Julian & Leslie Duval  
Jim Dyjak & Susan Sherry  
Ames & Beryl Early  
Eugene Eberhardt  
Bruce Ehlers  
Richard & Jeri Eimers  
Alfred & Karin Esser  
Harry & Jean Ettinger  
Renee Evans  
Harold Feder & Gloria Sandvik  
Steven & Karen Feitelberg  
Norm & Linda Ferber  
The Ferris Family  
Bertha Ficaro  
Stephen & Susan Finger  
Joan Fisher  
Joseph & Gwendolen Ford  
Mr. & Mrs. Richard Forsyth  
Mark & Lisa Franovich

John Frazier  
Marvin & Janine Free  
Dick & Lynn Freeland  
Jeff & Adele Friedman  
Alex & Nancy Friehauf  
Emmy Garnica & Don Geiger  
Louise Garrett  
James & Elizabeth Gautsch  
Dennis Geiler  
Anne Geisler  
Dave & Cora Georgens  
Wayne & Patti Germain  
Martin & Ruth Gilboa  
Dan & Cathy Gill  
Mr. & Mrs. William Gish  
Marvan Glozack  
David & Sona Goodblatt  
Rod Goodson  
Nancy Gordon & Barb Potts  
Michael & Jane Gordon  
Charles & Phyllis Graham  
Deanna Graumann  
Wayne & Amanda Green  
John & Dorothy Green  
Marcella Green  
Bruce Green  
Erik & Irna Gronborg  
Richard & Cheryl Gross  
Alex & Marianne Grossman  
Ron & Edie Ham  
Keith Harold  
Leonard & Frances Hart  
Carol Hart  
Blayne Hartman  
Chuck & Lee Hawley  
Woody & Connie Hays  
Paul & Susan Hays  
Jim & Phyllis Healy  
John & Judy Hegenauer  
James & Dagmar Helgager  
Michael & Kandi Hendersson  
Daniel & Susan Henry  
Thomas Hermann  
Henry Herms  
Perry Herst  
Peter & Julie Hevezi  
Anne Hewel  
Robert Higuchi  
Joan Ho  
Susan Hofmans  
Patricia Hogan  
Louis Hogrefe  
David Holzman  
Ken & Chris Hornback  
Paul & Caroline Howard  
Michael Imrich  
Teresa Insero  
Bob & Sandy Irwin  
Donald & Charlotte Jackson  
Bryan Jacobson  
Mark Jenne  
Carl & Charlotte Johnk

Duane Johnson  
Aaron Johnson & Benny Hinshaw  
Jennifer Jones  
Jonathan & MaryAnn Jones  
George & Gloria Jones  
Ken & Nancy Jong  
Jim & Louise Julig  
Jim & Mary Lou Kaae  
Sid Karin  
The Keenan-Rivers Family  
Tom & Panteha Kelly  
Mark & Brittainy Kersey  
James King  
Sharon Klein  
Michael & Heather Klicman  
Jason Knapp & Sara Appleton Knapp  
Terry Knox  
Kathryn Kolb  
Milan Kothari  
John & Joan Kroener  
Overton Kuhn  
Togaku & Ruth Kuroda  
La Costa Canyon High School Sunshine Fund  
John & Linda La Grange  
Fred & Joy Lane  
James Lauer  
Larry & Joyce Laveman  
Hugh Lawrence & Daina Krigens  
William & Elizabeth Lawson  
Frank & Shirley Layton  
Jeffrey & Patricia Leach  
Charles Leighton  
Jon & Judy Lelevier  
Patrick & Ainsley Lenihan  
Russell & Jill Levan  
David Levenson  
Paul Lighterink  
Delores Loedel  
Doug Loeser & Amy Horne  
Dave & Barbara Loskutoff  
Jennifer Luce  
Brian & Emily Lukacz  
Frank Lusby  
Douglas Lytton  
Robert MacFarlane  
Clay Macleod  
Pat Magnarella  
Edmund & Richele Mardon  
Arnold Markman & Elizabeth Michel  
Jeremy & Jill Martin  
Kevin & Julia Martin  
Greg Mauro  
Stephen & Margaret Mayfield  
Gary & Chris McBee  
James McCall & Carol McCall  
Michael & Karen McClune  
Alis McCurdy  
Janet McLaughlin  
Norman & Janice McMackin  
Lane & Martha McPhee  
Carole Melum  
Aviva Merion

Jim Michelsen & Mary Hensler  
Robin Mitchell  
Gene & Ruth Ann Mitchell  
John & Marilyn Mitchell  
Louis Montrose & Caroline Ding  
Dr. & Mrs. Richard Moore  
Marjorie Morse  
Kent & Amy Moser  
Jeremiah Murphy & Lauren Kiernan  
Lesley & Lanna Murphy  
James & Kathalyn Nelson  
Robert & Delores Noble  
Barclay & Deana Noble  
John & Barbara Nommesen  
Betty Normand  
David & Marlene Nourok  
George & Dudley O'Dell  
Ryan & Jenny Oehler  
Derrick & Jessica Oien  
Old Mission Montessori School  
Jerry & Phyllis Olefsky  
Robert Olson  
Gary & Julia Orso  
Dan Palmatier & Nadine Cerqua  
Ed & Jenny Paschall  
James Payne  
Jim & Ann Peter  
Hans Petermann  
David & Janet Peters  
Shirley Platzer-Stocks  
Pauline Plesset  
Kenneth & Sheila Poggenburg  
Mary Poniatowski  
Shirley Pounders Clement  
Michael & Luciana Powell  
Quentin Powers  
Jeffrey Pressman & Nancy Kollisch  
George & Donna Prine  
Carl Provder  
William Pultz & Maureen Moss  
Debra Quick-Jones  
Robert & Susan Rantzow  
Marty & Elizabeth Reed  
Sue Richardson  
Janet Riordan  
Harry & JoAnn Roesener  
Lawrence & Joy Rogers  
Wayne & Kristina Rogers  
Steve Rose & Sharon Clay Rose  
Jerry & Diane Rothenberg  
Tom & Sharon Rubinstein  
Karl Rudnick & Jill Cooper  
Kevin & Deborah Sagara  
San Dieguito Equine Group  
Christine Sanderson  
Catherine Santone  
Sid & Patricia Sarkar  
Chitra Saxena  
Pat & Margaret Schlesinger  
Judy Schramm  
Ken & Mary Lou Schultz  
John & Eleanor Schuster



Eduard Schwan & Jeri Abernathy  
Joseph Sheffo  
Al & Genie Shenk  
Jim & Sue Sherman  
Keith & Jan Shoolbred  
Sharla Short  
Jeffrey Shuman  
Karen Silsby  
William & Ellen Simms  
Sinai Family  
Catherine Smart  
Charles & Diane Smith  
Jeri Sober & Pam Waters  
Frances Spath  
Dan Sprague  
Cindy Standley  
John & Marilyn Steckert  
Gary Stewart  
Jack & Jane Stro  
Debbie Struck-Shampain  
John & Valetta Sueppel  
Rock & Suzanne Swanson  
Robert & Cindy Switzler  
Elizabeth Taylor  
Zack Taylor & Dot Renshaw  
David Theno  
Lisa Thompson  
Mary Thompson  
Jane Thorngren  
Janice Toomey  
Rhonda Towne  
Michele Tsugawa  
Joseph & Linda Tunner  
Suzanne Tylka  
Robert & Jane Upp  
Peter Vajda  
Rankine & Mary Van Anda  
Mike Varney & Jennifer Ball  
Grace Veltman  
Tom & Sylvia Volz  
Gerald & Harriet Waanders  
Barbara Wallach  
Philip Wanner  
Raymond Warner  
Jon & Thresa Wayne  
Edward & Naomi Weber  
Jim Weinberger  
Kimberly Wesby  
Martyn & Linda Beth Widgery  
Sarah Wiley  
John & Christine Willems  
Curtis & Melinda Williams  
Elizabeth Wilson  
Mark Wilson  
Russ Wilson  
John & Patricia Wolfe  
Francisco & Toni Wong  
James & Maryann Wood  
James & Jane Woulfe  
John & Ruth Wright  
Bonnie Wright  
Pete & Sharon Wylie

Art & Sandy Yayanos  
Ron & Pat Yeakley  
Donald York  
Joe & Desiree Zagara  
Sholeh & Bijan Zayer  
Lynne Zimet

**"Rock Crab - \$30+"**  
David Allen  
Barbara Anderson  
Dale & Sharel Andrews  
Nina Aschbrenner  
David Baker & Melinda O'Brien  
Neomi Balinth  
Judith Barney  
Laurie Baum  
Elsie Begler  
Thomas & Lynda Benacka  
Shirley Berry  
Sija Bjorklund  
Bruce & Leonora Bridges  
Robert & Nancy Brown  
Cristina Burlem  
Marie Burnham  
Vernon & Ruth Burns  
Madeline Butler  
Adrian & Laura Caddick  
Nigel Calcutt  
Carol Carson  
John Christofferson & Vivian Lauderdale  
Katherine Cleary  
Susan Cole  
Cathy Collier  
Steve Cologne  
Monty & Leonie Cooper  
Carolyn Cope  
Alice Cuchna  
Victoria Cypherd  
Charles & Marilyn Dashe  
David Daymude & Lisa Lane  
Dorothy Deans  
Jim Determan  
Vivien Duncan  
Rose Ann Duncan  
Donna Eckstein  
Peggy Duggan French & William French  
Kelly Fulton  
Sam & Joan Gabriel  
Robert & Sharon Garcia  
Mr. & Mrs. Charles R. Gifford  
Marc Gittelsohn  
Steve Goetsch  
Jeanne Gordon  
Evalyn Greb  
Scott Griffiths & Eileen Griffiths  
Inga Grove  
Eric Groves  
Charlotte Gumbrell  
Linda Halverson  
Diane Hardison  
Jerry Harmon  
Carole Havens

Georgia Hayashi  
Diane Hazard  
Mary Heeb  
Richard & Aileen Heimlich  
Richard Hendlin  
Kathy Herington  
David & Joan Herskowitz  
Jennifer Hewitson  
Hewlett-Packard Company  
Richard Hicks  
Mark & Jane Hoppe  
Kristen Howard  
Debra O. Inada  
Steve Janiszewski  
Dorothy Jensen  
Linda Joerden  
Frances Johnson  
Bill & Elsie Johnstone  
Patricia & Franklin Jones  
Gordon & Emma Jones  
R.W. & Laverne Jones  
Susan Kanfer  
Joseph & Carol Koch  
Betty Kollisch  
Lynne Kratka  
Jessica Laemmle  
George & Carol Law  
Angie Lehmann  
Clara Leonida  
Richard & Gail Liebig  
Steve Lightner & Marc Smith  
Mark Mauricio  
Susan McEachern  
Ray & Lillias McGrath  
Marilee McLean  
Alice McNally Scull  
Chris Metzler  
David Meza  
Mimi Miller  
Robert Murphy & Marie Grady  
Wayland & Helen Myers  
George Nakamura  
Alex Neal  
Josephine Neeb  
Nancy Neigus  
Jennifer Nelson  
Michael Newhouse  
Michael Newman  
Stephen O'Leary  
Patty O'Reilly  
Harriett Papayouan  
Rosalie Parkinson  
Eric Peterson  
Iris Peterson  
Charles Plost  
Jon & Patti Polikoff  
Bernard Preyer  
Ruth Queen  
Denise Redvers-Higgins & Ellen Broadbent  
Lynne Rosengard  
Jean Rowland  
Vicki Rubinstein

Alan Russell  
Mary Salvato  
Nancy Satur  
Rick Schlesinger & Judy Nakatomi  
Jane Schmauss  
Cheryl Schwaebe  
Barbara Schweller  
Paul Shames  
David Sickels  
Marcia Siegel  
Jaroslava Simmons  
Lissa Skiles  
Emery & Joanne Smith  
Peter & Carol Soria  
Mark Stabb  
Bruce & Caroline Stabile  
Herschel Stern  
Barbara J Stewart  
James Summers  
Robert & Jane Talbert  
Emily & John Tannone  
Paul Templin  
Robert & Marie Tessieri  
Mike Tice  
Wendy Turner  
Kim Valentine  
Colleen Veneri  
Stanley & Judith Vignos  
Jutta Von Weise  
Marilyn Voorhies  
Lorraine Wagner  
Alan Waldvogel  
Barbara Walker  
Pamela Walker  
Kermit & Bonnie Warren  
Ron Warthen  
Paul Weddle  
Benjamin & Virginia White  
Ruth Wilke  
Robert & Phyllis Williams  
Karen Wilson  
Karen Wise  
Mary Yount

**"Gobi - \$25+"**

Agnes Abola  
Ron & Mimi Baer  
Rebecca Blake  
Terry & Lisa Blatnick  
James & Nancy Byrne  
Steve & Kathy Cook  
Randall Cornish  
Sean & Maureen Coveney  
Frederick Dawn & Donna Mancuso  
J. David & Rosann Drielsma  
Sylvia Fitzgerald  
Wanda Forman  
Edward & Stephanie Hall  
C. Thomas Hardin & Clare Calman  
Louis Hock  
Bonnie Jenkins  
Jeff Krichmar

Alice Lemon  
Steve Levinson & Jobeth Halper  
Howard & Roxanna Lewis  
Shirley Modine  
Michael & Eren Nemiroff  
Mark & Suzanne Nims  
Donald & Janice Parks  
Elena Pitt  
Jim & Grace Raymond  
Gerald & Susan Reba  
Doris Repa  
Maynard Rice & Trudy Sanchez  
Matt Shaughnessy & Pamela Hinchcliffe  
Milton Spinner  
Wolfie Stewart  
Kathryn Sturch  
Marjorie Waldroop  
Gordon & Ellen Wright  
Stanley Zahler

**"Contributor -<\$25"**

Adrienne Adams  
Cheryl Alden  
Muriel Anderson  
Betsy Barnhart  
Ann Chavez  
William & Marni Hayman  
John Howard  
Harvey & Elizabeth Karten  
Joan McCaffrey  
Allen & Jane Monts  
Warren & Roseann Peterson  
William Picksly  
Dana Schierenbeck  
Mr. & Mrs. Earl Schweizer  
Robert & Maryann Spori  
Julia Stanert  
Bruce & Marcia Walthers  
Joan Williamson